

1010015-0016

6/24/2015

6/24/2015

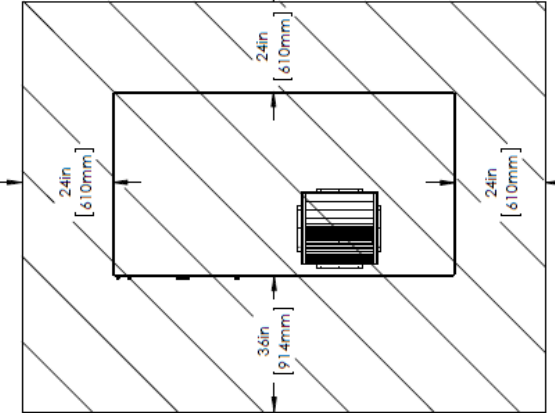
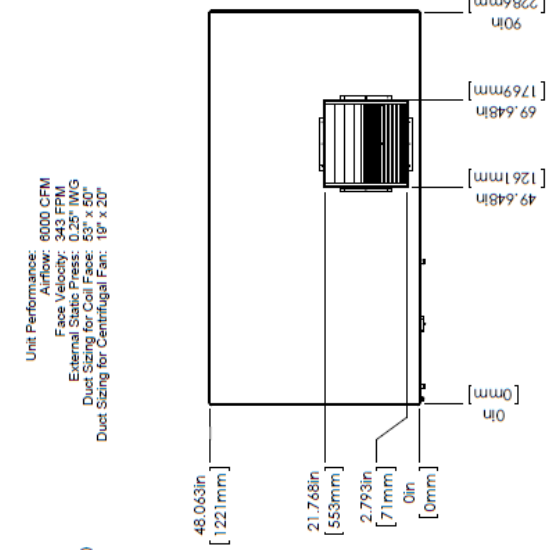
1010015-0016

Unit Specifications:

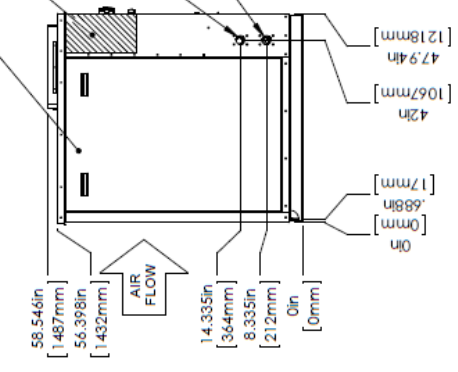
- (1) Scroll, Copeland or Equivalent Compressor
- (1) Double Wall Brazed Plate Condensers
- (1) 1/2" Cu Tubing, DX Coil Evaporators
- (3) 1/2" HP (150 Max. PSI, Standard) Potable Water Pump
- Fan Type: (1) 18" Diameter
- Fan Speed: 1750 RPM
- Fan Motor Type: TEFC
- Fan Motor Hp: 5 Hp (Standard)
- Control: Electromechanical Controls
- Micro Processor(PLC Optional)
- Approximate Ship Weight: 280 lbs (EST)
- Refrigerant: R134a

- Available Options:**
- Spring Isolation Kit
 - Air Filter
 - Rain Hood
 - BMS Protocol
- Fin Material Options:**
- Aluminum
 - Copper
 - Electrofin
 - Polycoat
- Cabinet Material Options:**
- Mill Finish Aluminum
 - Galvanized Steel
 - 304 Stainless Steel
 - 316 Stainless Steel

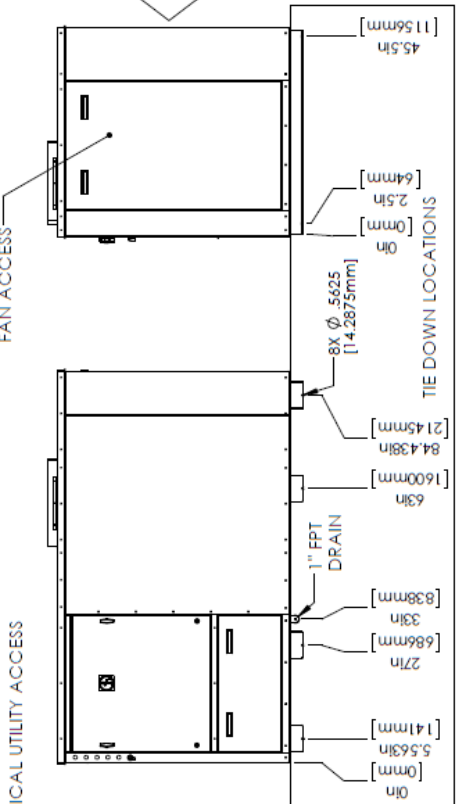
Unit Performance:
 Airflow: 6000 CFM
 Face Velocity: 343 FPM
 External Static Press: 0.25" IWG
 Duct Sizing for Coil Face: 53" x 50"
 Duct Sizing for Centrifugal Fan: 18" x 20"



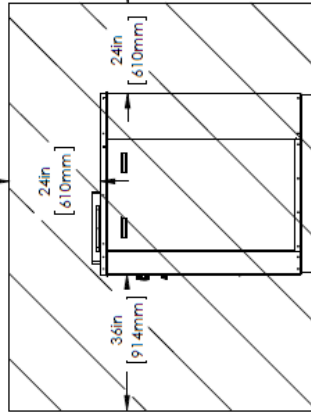
MECHANICAL ACCESS



ELECTRICAL UTILITY ACCESS



RECOMMENDED SERVICE CLEARANCE



UNLESS OTHERWISE SPECIFIED:
 DIMENSIONS ARE IN INCHES
 TOLERANCES:
 ANGULAR DIMENSIONS: ±.005
 TWO PLACE DECIMAL: ±0.03
 THREE PLACE DECIMAL: ±0.031

COLMAC INDUSTRIES
 401 N. Lincoln, Colville, Washington, 99114
 (509) 864-6000
GENERAL SUBMITTAL
HPA 15 VERTICAL

DATE: 02/27/14	SCALE: 1:1	SHEET NO.: 1
REV. NO.: B	REV. DATE: 06/24/15	SHEET TOTAL: 1
DO NOT SCALE DRAWING		
DESIGNED BY: []	CHECKED BY: []	APPROVED BY: []
PROJECT: 1010015-0016		
TITLE: GENERAL SUBMITTAL HPA 15 VERTICAL		
DRAWN BY: []		
DATE: 02/27/14		
SCALE: 1:1		
SHEET NO.: 1		
SHEET TOTAL: 1		

PROPRIETARY AND CONFIDENTIAL
 THE INFORMATION CONTAINED IN THIS DRAWING IS THE SOLE PROPERTY OF COLMAC INDUSTRIES. ANY REPRODUCTION IN PART OR AS A WHOLE WITHOUT THE WRITTEN PERMISSION OF COLMAC INDUSTRIES IS PROHIBITED.