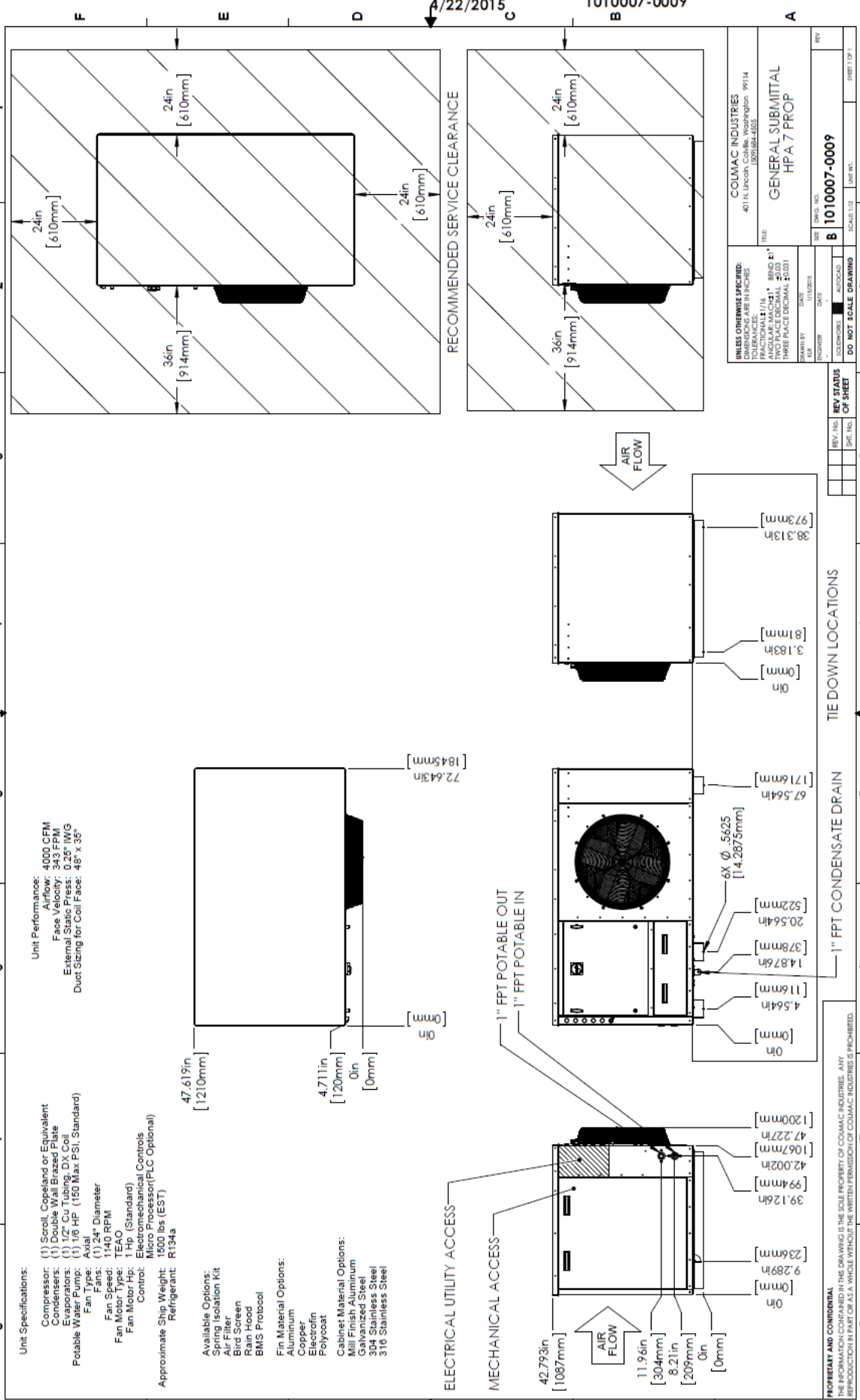


1010007-0009

4/22/2015

1010007-0009



**Unit Specifications:**

- Compressor: (1) Scroll, Copeland or Equivalent
- Condensers: (1) Double Wall Brazed Plate
- Evaporators: (1) 1/2" Cu Tubing, DX Coil
- Potable Water Pump: (1) 1/8 HP (150 Max PSI, Standard)
- Fan Type: Axial
- Fans: (1) 24" Diameter
- Fan Speed: 1140 RPM
- Fan Motor Type: TEAO (Standard)
- Fan Motor Hp: Electronemechanical Controls
- Control: Micro Processor (PLC Optional)
- Approximate Ship Weight: 1500 lbs (EST)
- Refrigerant: R134a

**Available Options:**

- Spring Isolation Kit
- Air Filter
- Part Clean
- Rain Hood
- BMS Protocol

**Fin Material Options:**

- Aluminum
- Copper
- Electrofin
- Polycoat

**Cabinet Material Options:**

- Mill Finish Aluminum
- Galvanized Steel
- 304 Stainless Steel
- 316 Stainless Steel

**Unit Performance:**

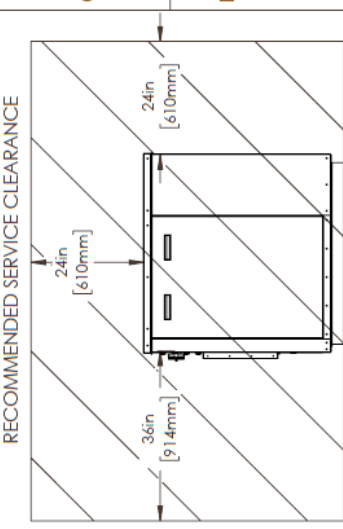
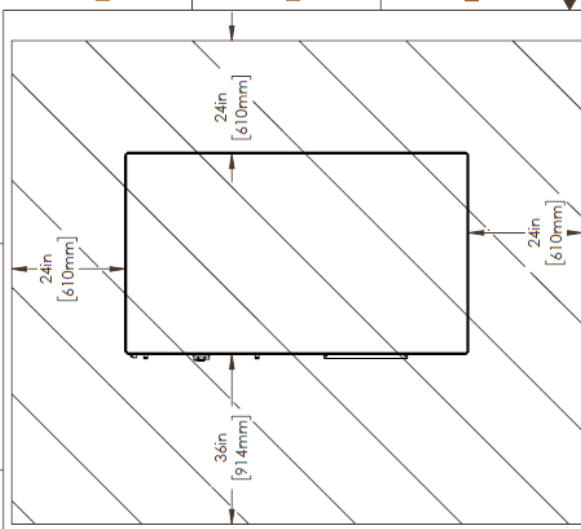
- Capacity: 4000 CFM
- Face Velocity: 343 FPM
- External Static Press: 0.25" WG
- Duct Sizing for Coil Face: 48" x 35"

4/22/2015

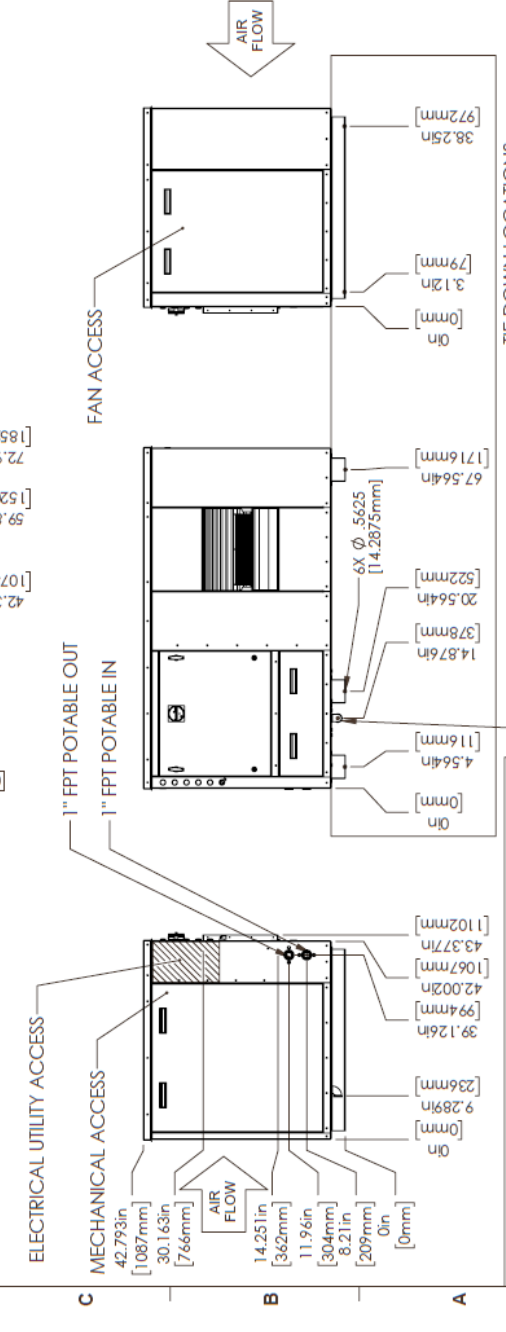
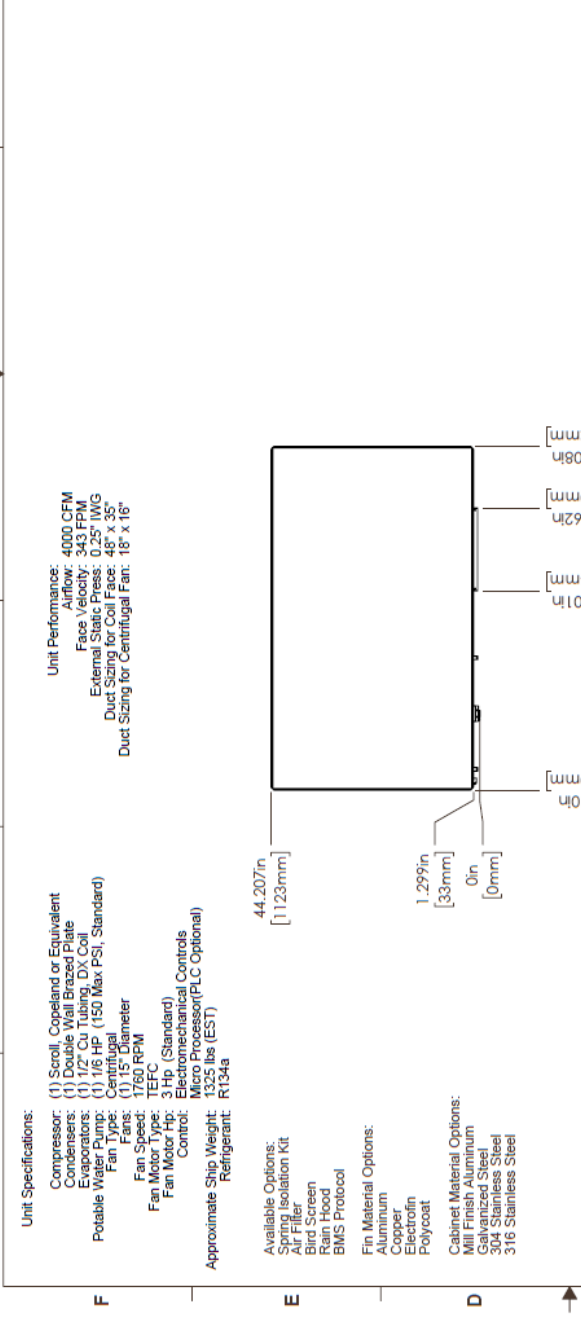
1010007-0009

UNLESS OTHERWISE SPECIFIED: DIMENSIONS ARE IN INCHES FRACTIONAL: 1/16, 1/8, 1/4, 3/8, 1/2, 5/8, 3/4, 7/8 DECIMAL: 0.031, 0.062, 0.125, 0.250, 0.500, 1.000 THREE PLACE DECIMAL 2/101		COLMAC INDUSTRIES 401 N. Lincoln, Columbia, Washington 99114 (509) 838-2383	
DATE: 4/22/2015	SCALE: 1:1	REV: B	1010007-0009
DESIGNED BY: [Redacted]	CHECKED BY: [Redacted]	GENERAL SUBMITTAL HPA 7 PROP	
ENGINEER: [Redacted]	DATE: [Redacted]	SCALE: 1:1	LINE NO.:
DO NOT SCALE DRAWING		REV. NO.:	SHEET NO.:
REV STATUS		REV. NO.:	SHEET NO.:

PROPERTY AND CONFIDENTIAL  
IN THE DRAWING IS THE SOLE PROPERTY OF COLMAC INDUSTRIES. ANY  
REPRODUCTION IN PART OR AS A WHOLE WITHOUT THE WRITTEN PERMISSION OF COLMAC INDUSTRIES IS PROHIBITED.



RECOMMENDED SERVICE CLEARANCE



- Unit Specifications:**
- Compressor: (1) Scroll, Copeland or Equivalent
  - Condensers: (1) Tube in Shell
  - Evaporators: (1) 1/2" Co. Tube in Shell
  - Potable Water Pumps: (1) 1/6 HP (150 Max. PSI, Standard)
  - Fan Type: Centrifugal
  - Fans: (1) 15" Diameter
  - Fan Speed: 1760 RPM
  - Fan Motor Type: TEFC
  - Fan Motor Hp: 3 Hp (Standard)
  - Control: Electromechanical Controls
  - Approximate Ship Weight: 1325 lbs (EST)
  - Refrigerant: R134a
- Unit Performance:**
- Capacity: 4000 CFM
  - Face Velocity: 343 FPM
  - External Static Press: 0.25" WG
  - Duct Sizing for Coil Face: 48" x 35"
  - Duct Sizing for Centrifugal Fan: 18" x 18"
- Available Options:**
- Spring Isolation Kit
  - Air Filter
  - Bird Screen
  - Wash Hood
  - BMS Protocol
- Fin Material Options:**
- Aluminum
  - Copper
  - Electrofin
  - Polycoat
- Cabinet Material Options:**
- Mill Finish Aluminum
  - Mill Finish Stainless Steel
  - 304 Stainless Steel
  - 316 Stainless Steel

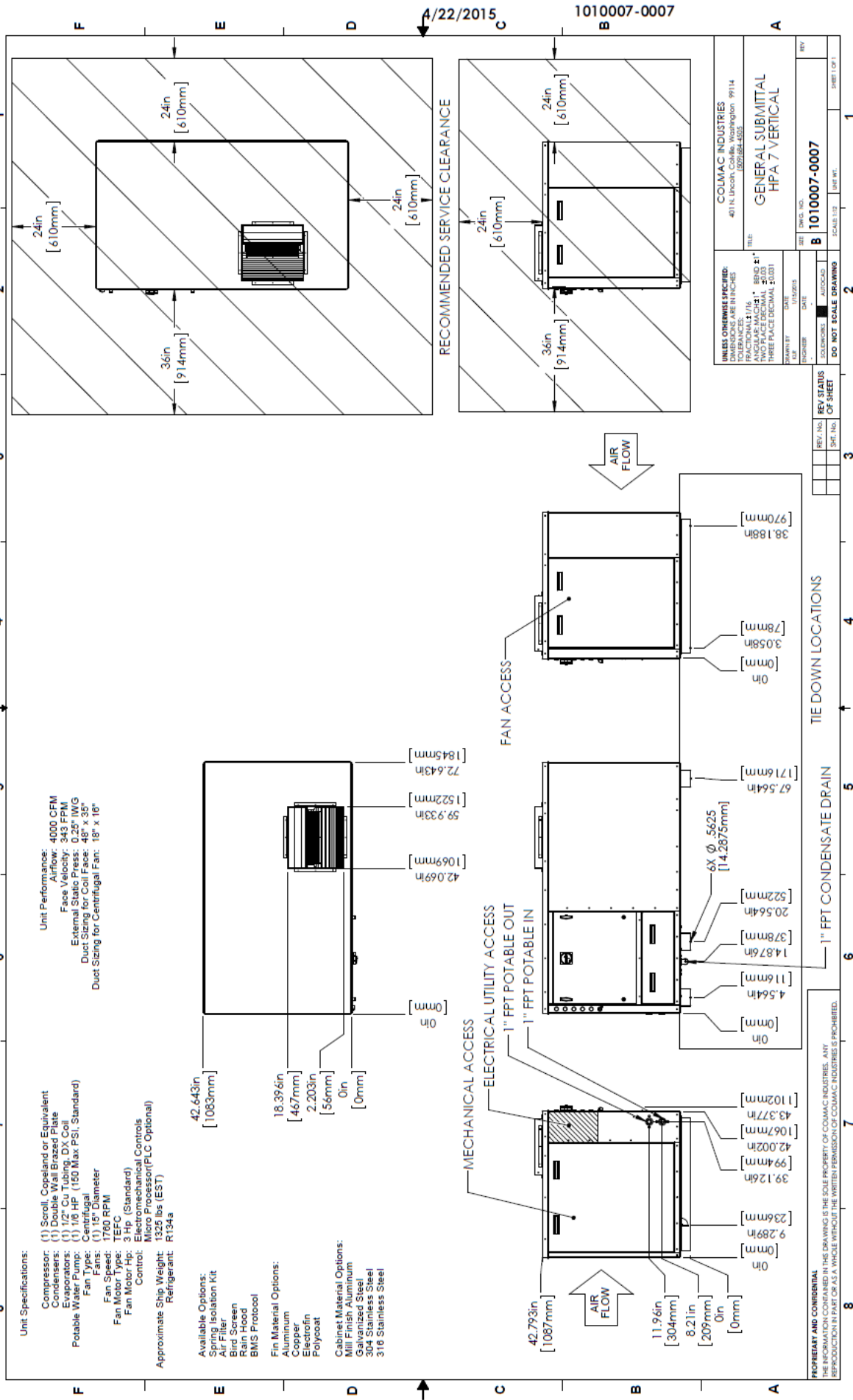
<b>BUSINESS OPERATIONS SPECIFIED:</b> DIMENSIONS ARE IN INCHES TOLERANCES: ±.015" / ±.010" ANGULAR: MACH 1" ±.010" TWO PLACE DECIMAL #.010" THREE PLACE DECIMAL #.003"		<b>COLMAC INDUSTRIES</b> 401 N. Lincoln, Lincoln, Colorado, Washington 99114 (502) 684-4300	
<b>FILE:</b> GENERAL SUBMITAL HPA 7 CENTRIFUGAL		<b>SIZE:</b> DWG. NO. <b>B</b> 1010007-0008	
<b>SCALE:</b> 1:1 SHEET 1 OF 1		<b>DO NOT SCALE DRAWING</b>	
<b>ENGINEER:</b> DATE:	<b>DRAWN BY:</b> DATE:	<b>REV. NO.:</b> OF SHEET:	<b>REV. DATE:</b> OF SHEET:

**PROPRIETARY AND CONFIDENTIAL**  
 THE INFORMATION CONTAINED IN THIS DRAWING IS THE SOLE PROPERTY OF COLMAC INDUSTRIES. ANY REPRODUCTION IN PART OR AS A WHOLE WITHOUT THE WRITTEN PERMISSION OF COLMAC INDUSTRIES IS PROHIBITED.

1010007-0007

4/22/2015

1010007-0007



REV	NO.	DATE	DESCRIPTION	BY	CHK
B	1010007-0007	11/22/2013	ISSUED FOR CONSTRUCTION		
DO NOT SCALE DRAWING					
SCALE: 1/8" = 1'-0"					
SHEET 1 OF 1					

REV. NO.	REV. STATUS	REV. DATE
1	ISSUED FOR CONSTRUCTION	11/22/2013

COLMAC INDUSTRIES	401 N. Lincoln, Corvallis, Washington 99114
TEL: (509) 826-6555	
GENERAL SUBMITTAL	
HPA 7 VERTICAL	

**PROPRIETARY AND CONFIDENTIAL**  
 THE INFORMATION CONTAINED IN THIS DRAWING IS THE SOLE PROPERTY OF COLMAC INDUSTRIES. ANY REPRODUCTION IN PART OR AS A WHOLE WITHOUT THE WRITTEN PERMISSION OF COLMAC INDUSTRIES IS PROHIBITED.