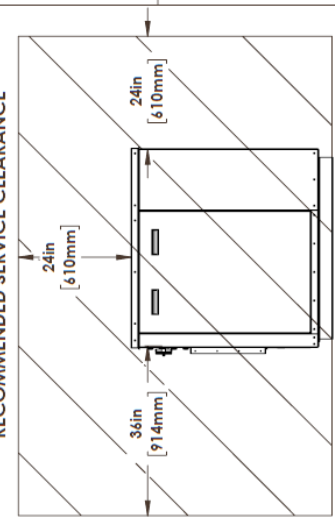
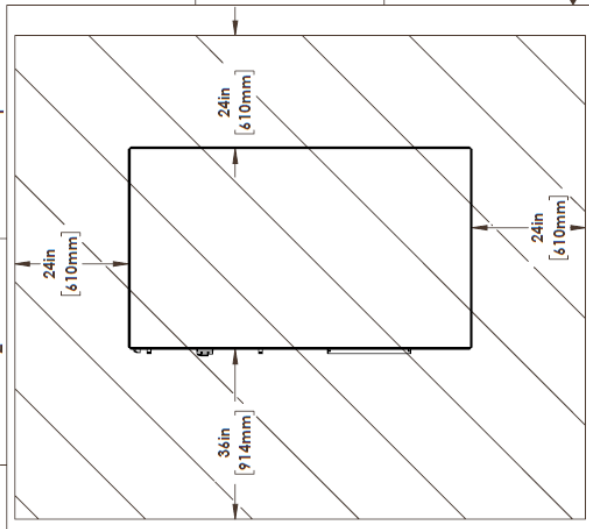


UNLESS OTHERWISE SPECIFIED: DIMENSIONS ARE IN INCHES		COLMAC INDUSTRIES 401 N. Lincoln, Colville, Washington 99114 (509) 864-4555	
TOLERANCES: FRACTIONS ANGULAR: MACH 1° BEND 2° TWO PLACE DECIMAL THREE PLACE DECIMAL		DRAWN BY: [REDACTED] DATE: [REDACTED] CHECKED BY: [REDACTED] DATE: [REDACTED]	
REV. NO.	REV. DATE	REV. NO.	REV. DATE
1		2	
DO NOT SCALE DRAWING		DO NOT SCALE DRAWING	
SCALE: 1:1		SCALE: 1:1	
SHEET 1 OF 1		SHEET 1 OF 1	

PROPERTY AND CONFIDENTIAL
THE INFORMATION CONTAINED IN THIS DRAWING IS THE SOLE PROPERTY OF COLMAC INDUSTRIES. ANY
REPRODUCTION IN PART OR AS A WHOLE WITHOUT THE WRITTEN PERMISSION OF COLMAC INDUSTRIES IS PROHIBITED.



UNLESS OTHERWISE SPECIFIED:
DIMENSIONS ARE IN INCHES
TOLERANCES:
FRACTIONS: ±1/16"
DECIMALS: ±0.031"
ANGULAR: ±0.1°
TWO PLACE DECIMAL: ±0.03"
THREE PLACE DECIMAL: ±0.031"

COLMAC INDUSTRIES
401 N. Lincoln, Colville, Washington 99114
(509)884-6585

FILE
**GENERAL SUBMITTAL
HPA 9-12 CENTRIFUGAL**

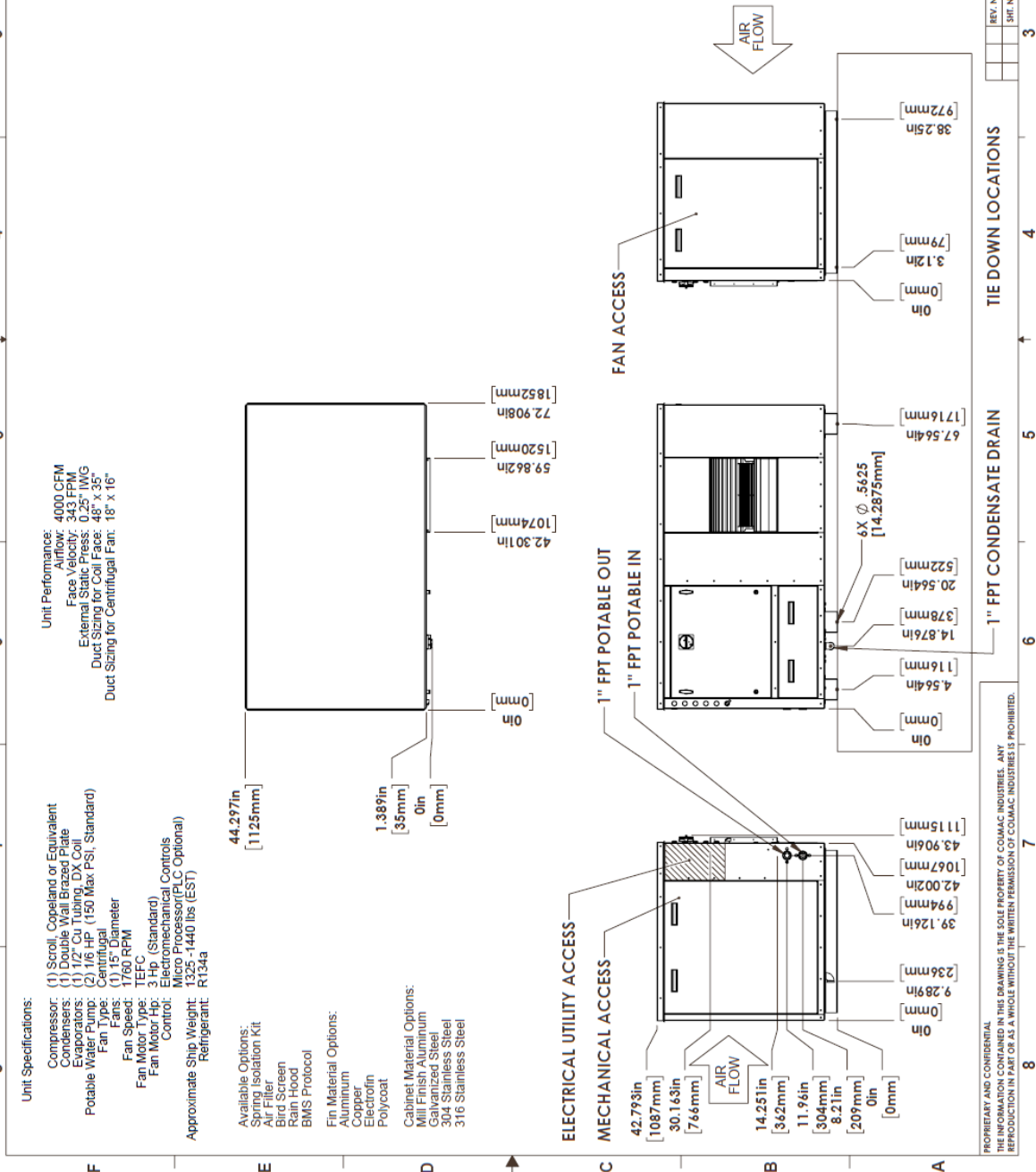
ISSUE NO. DATE
B 1010009-0006

SCALE 1:12

DO NOT SCALE DRAWING

REV STATUS OF SHEET
REV No. OF SHEET

SHEET 1 OF 1

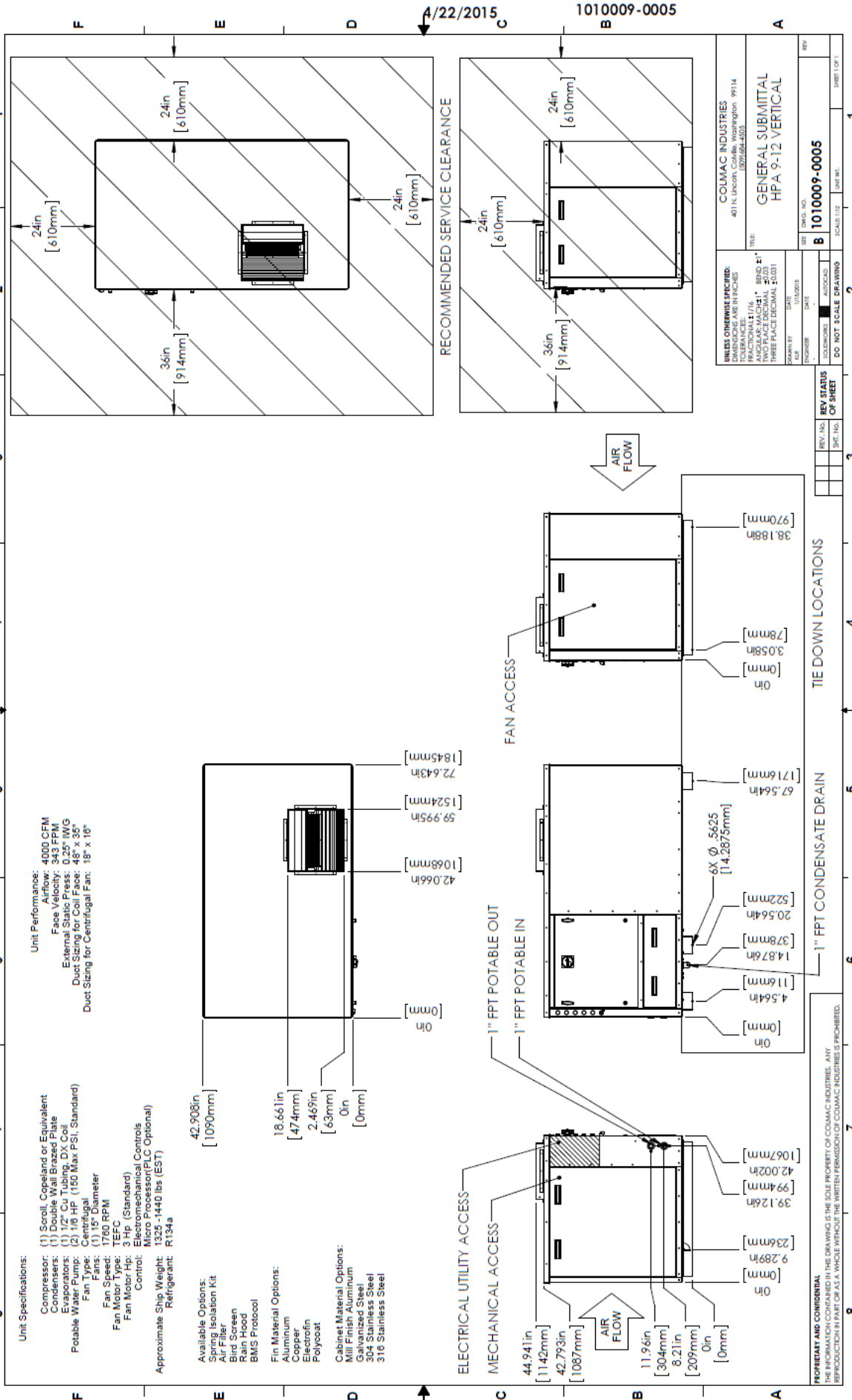


PROPRIETARY AND CONFIDENTIAL
 THE INFORMATION CONTAINED IN THIS DRAWING IS THE SOLE PROPERTY OF COLMAC INDUSTRIES. ANY
 REPRODUCTION IN PART OR AS A WHOLE WITHOUT THE WRITTEN PERMISSION OF COLMAC INDUSTRIES IS PROHIBITED.

1010009-0005

4/22/2015

1010009-0005



PROPRIETARY AND CONFIDENTIAL
 THE INFORMATION CONTAINED IN THIS DRAWING IS THE SOLE PROPERTY OF COLMAC INDUSTRIES. ANY
 REPRODUCTION IN PART OR AS A WHOLE WITHOUT THE WRITTEN PERMISSION OF COLMAC INDUSTRIES IS PROHIBITED.

TIE DOWN LOCATIONS

REV. NO.	REV. DATE	REV. DESCRIPTION

DO NOT SCALE DRAWING

SCALE: 1/2" = 1'-0"

SHEET NO. 1

REV. STATUS OF SHEET

PROJECT NO. B 1010009-0005

FILE NO. GENERAL SUBMITTAL HPA 9-12 VERTICAL

COLMAC INDUSTRIES
 401 N. Lincoln, Colfax, Washington 99114
 (509) 884-4575

DATE: 4/22/2015

BY: [Signature]

4/22/2015

1010009-0005

1