

1010015-0019

2/17/2016

8 7 6 5 4 3 2 1

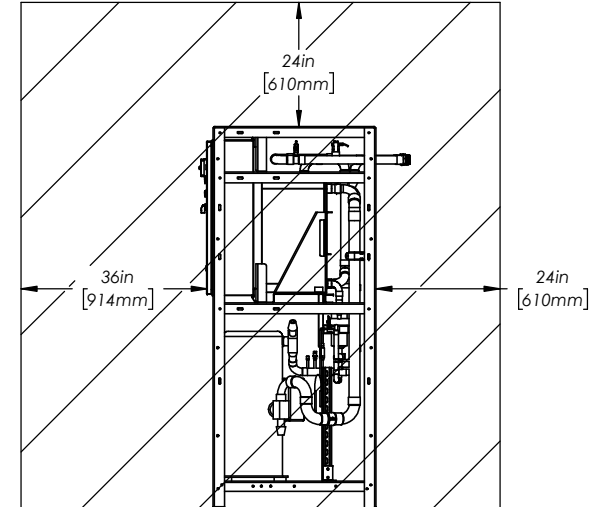
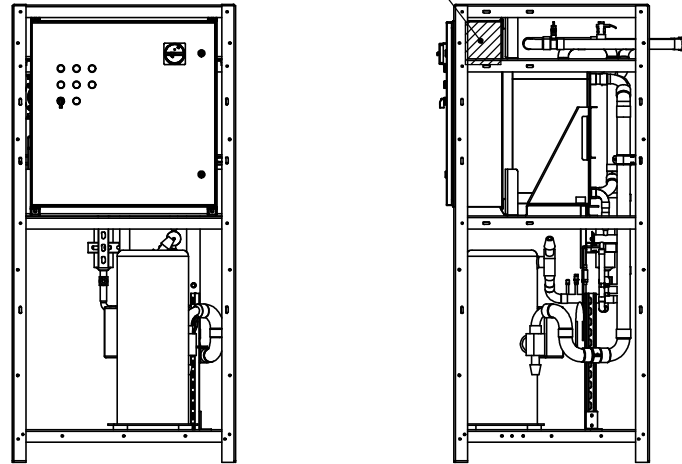
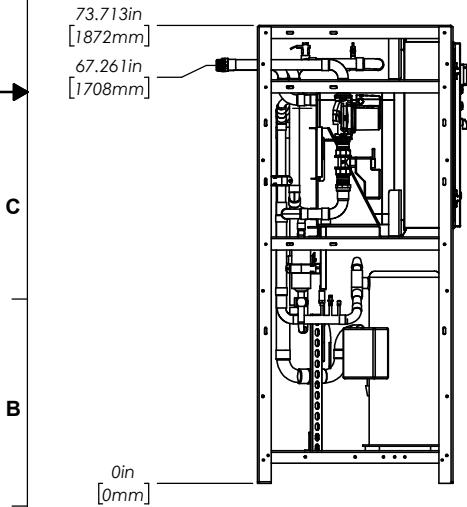
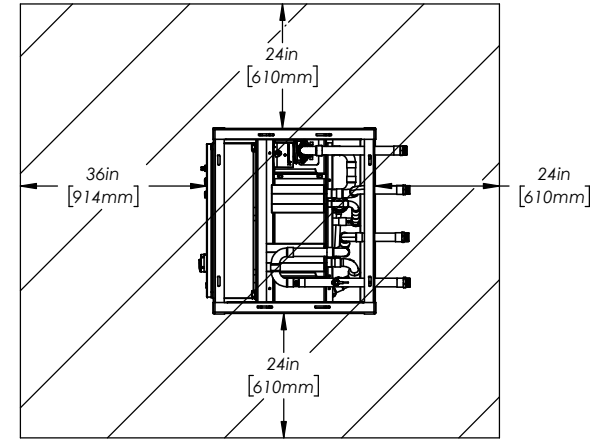
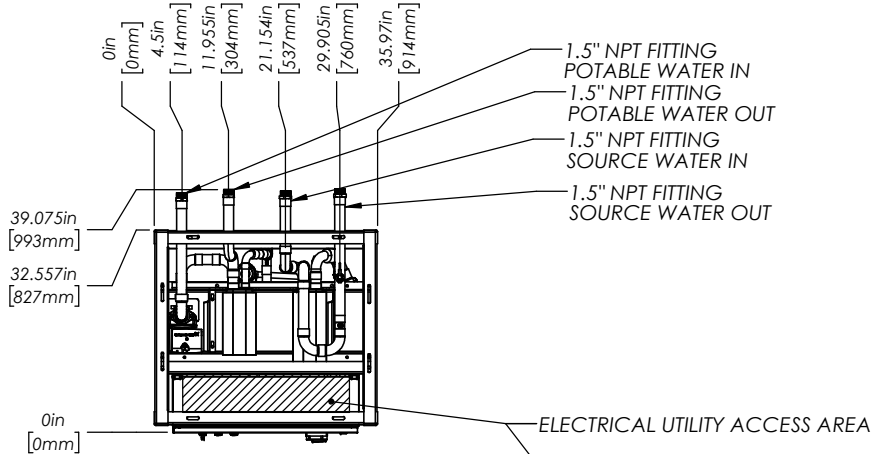
Unit Specifications:

- Compressor: (1) Scroll, Copeland or Equivalent
- Condensers: (1) Vented Double Wall Brazed Plate
- Evaporators: (1) Single Wall Brazed Plate
- Potable Water Pump: (1) 1/3 HP (145 Max PSI, Standard)
- Source Water Pump: Provided by Others
- Control: Electromechanical
- Microprocessor (PLC) (Optional)
- Frame: 304 SST (Standard)
- Approximate Ship Weight: 1150 lbs (EST)
- Refrigerant: R134a

- Available Options:
- Low Source Evaporator
 - High Source Kit
 - Insulated Cabinet
 - NEMA 1 Electrical Enclosure or Better
 - Spring Isolation Kit

- Optional Cabinet Material
- Mill Finish Aluminum
 - Galvanized Steel
 - 304 Stainless Steel
 - 316 Stainless Steel

Note: Shown Without Cabinet Option For Clarity
 Allow 3" In All Frame Dimensions For Cabinet
 Cabinet Will Increase Ship Weight



PROPRIETARY AND CONFIDENTIAL
 THE INFORMATION CONTAINED IN THIS DRAWING IS THE SOLE PROPERTY OF COLMAC INDUSTRIES. ANY REPRODUCTION IN PART OR AS A WHOLE WITHOUT THE WRITTEN PERMISSION OF COLMAC INDUSTRIES IS PROHIBITED.

UNLESS OTHERWISE SPECIFIED:
 DIMENSIONS ARE IN INCHES
 TOLERANCES:
 FRACTIONAL: $\pm 1/16$
 ANGULAR: MATCH $\pm 1^\circ$ BEND $\pm 1^\circ$
 TWO PLACE DECIMAL: ± 0.03
 THREE PLACE DECIMAL: ± 0.031

COLMAC INDUSTRIES
 401 N. Lincoln, Colville, Washington 99114
 (509)684-4505

TITLE:
**GENERAL SUBMITTAL
 HPW 15**

DRAWN BY: KLR DATE: 8/28/2014
 ENGINEER: DATE:

SIZE: B DWG. NO. 1010015-0019 REV: -

REV. No.	REV STATUS OF SHEET
SHT. No.	DO NOT SCALE DRAWING

SOLIDWORKS AUTOCAD
 SCALE: 1:12 LINE WT. SHEET 1 OF 1

8 7 6 5 4 3 2 1

2/17/2016 1010015-0019