

Packaged Heat Pump Systems

The Best of Two Worlds: Efficiency and Thermal Storage

Based on Colmac's signature series storage design, Colmac's skid packs come pre-plumbed, pre-tested and ready to hook up to the facility. Bolt the pack together, pipe it to the building and be done quickly and with confidence the system works correctly right out of the box.

Colmac makes it simple:

- Compact and manageable
- Easily expandable
- Affordable
- Various tank sizes available

Accessories:

- Ring Main Heaters
- Expansion Tanks
- Auxiliary Heaters
- Auxiliary pumps



HPW12 Water Source 360 Gallon Skid Pack

COLMAC 
WATERHEAT

401 N. Lincoln • P.O. Box 72
Colville, WA 99114 USA
Tel: (509) 684-4505 • Fax: (509) 684-4500
Toll Free: (800) 926-5622
sales@colmacind.com | www.colamcwaterheat.com

Rigid Polyester Air Filters

Colmac WaterHeat offers filter media that is a 1" thick bi-directional air flow rigid polyester air filter (RPAF) providing high performance air filtration as an economical alternative to disposable air filters. The polyester fibers are unaffected by moisture, and clean easily with water for long term use. By protecting the fins of the coil from corrosion promoting contaminants (like bird feathers or insects), these RPAF filters will help extend the life of the coil. Colmac's RPAF resists flaking and shedding, does not have sharp edges, and due to its rigidity, it does not require a frame.

Please contact Colmac WaterHeat for more information or to locate a sales representative in your area.



A line of Colmac HPA15 Air Source Water Heating Heat Pumps with RPAF filters on a rooftop in Hawaii

Manufacturer's data

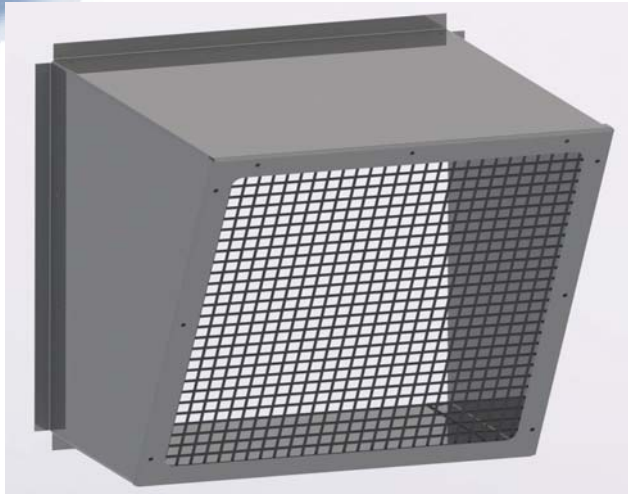
UL flammability designation (UL Classification)	As to flammability only, FMVSS302
Percentage of dust captured by filter under test conditions average (arrestance efficiency)	84%
Clean filter resistance to air flow (initial resistance)	0.09" w.g.
Dust captured before reaching end of test pressure (dust holding capacity)	229 grams
MERV 7 Rated	



401 N. Lincoln • P.O. Box 72
Colville, WA 99114 USA
Tel: (509) 684-4505 • Fax: (509) 684-4500
Toll Free: (800) 926-5622
sales@colmacind.com | www.colmacwaterheat.com

Rainhoods with Bird Screen

Colmac has designed easy to install rain hoods with bird screen for all air source water heating heat pumps. Designed for outdoor applications, these rainhoods are a formed three piece design to prevent leakage and eliminate water in the blower from rain exposure. Rainhoods are available in the same cabinet material as any Colmac air source heat pump. The 1/8" welded stainless steel screen is finger safe. Rainhoods can be ordered on new heat pumps from the factory or ordered separately for field installation on older heat pumps. Bird screens are also available for purchase as a stand alone item.



Rainhood with Bird Screen for Air Source Water Heating Heat Pumps



Bird screen for Air Source Water Heating Heat Pumps



HPA4 Air Source Water Heating Heat Pump with Rainhood and Bird Screen

COLMAC 
WATERHEAT

401 N. Lincoln • P.O. Box 72
Colville, WA 99114 USA
Tel: (509) 684-4505 • Fax: (509) 684-4500
Toll Free: (800) 926-5622
sales@colmacind.com | www.colmacwaterheat.com

Custom Torque Wrench Adapters

Colmac WaterHeat offers specifically crafted torque wrench crow's feet sets for use on the range of King Valves on most Colmac Water Heating Heat Pumps (exceptions are HPA4, HPW2 and HPW4). Along with the custom crow's feet, a King Valve retaining bar is offered to counter the torque applied to the valve. Colmac Industries offer complete sets, machine specific sets, or individual parts. Each is stamped to the proper torque rating for the valve. Please contact Colmac Industries to order or for more information.



Rotalock Crow Foot Set H7

For use on Colmac Models: HPA7-HPA9 and HPW7-HPW9
 Part Number: 690020-0007 (Comprised of 690020-0005 and 690020-0006)



Rotalock Crow Foot Set H12

For use on Colmac Models: HPA11-HPA12 and HPW11-HPW12
 Part Number: 690020-0012 (Comprised of 690020-0004 and 690020-0005)



Rotalock Crow Foot Set H15

For use on Colmac Models: HPA15 and HPW15-HPW120M
 Part Number: 690020-0015 (Comprised of 690020-0003 and 690020-0004)



Rotalock Crow Foot Set

For use on all Colmac Models (Except HPA4 and HPW2-HPW4)
 Part Number: 690020-0001



Rotalock Valve Retaining Tool

For use on all Colmac Models (Except HPA4 and HPW2-HPW4)

Part Number: 690020-0002



Using Colmac Crow Foot and Retaining tools to torque discharge line



Using Colmac Crow Foot and Retaining tools to torque suction line

Quick Reference Ordering Guide

Colmac Part Number	Part Description	Use with Colmac Heat Pump Model
690020-0001	Rotalock Crow Foot Set	For use on all Colmac Models (except HPA4 and HPW2-HPW4)
690020-0002	Rotalock Valve Retaining Tool	For use on all Colmac Models (except HPA4 and HPW2-HPW4)
690020-0004	Rotalock Crow Foot 2-9/16"	For use on Colmac Models HPA15 and HPW15 and larger
690020-0004	Rotalock Crow Foot 2"	For use on Colmac Models HPA12-HPA15 and HPW12-HPW15
690020-0005	Rotalock Crow Foot 1-1/2"	For use on Colmac Models HPA7-HPA12 and HPW7-HPW12
690020-0006	Rotalock Crow Foot 1-3/8"	For use on Colmac Models HPA7-HPA12 and HPW7-HPW9
690020-0007	Rotalock Crow Foot Set H7	For use on Colmac Models HPA7-HPA9 and HPW7-HPW9
690020-0012	Rotalock Crow Foot Set H12	For use on Colmac Models HPA11-HPA12 and HPW11-HPW12
690020-0015	Rotalock Crow Foot Set H15	For use on Colmac Models HPA15 and HPW15 and larger



401 N. Lincoln • P.O. Box 72
 Colville, WA 99114 USA
 Tel: (509) 684-4505 • Fax: (509) 684-4500
 Toll Free: (800) 926-5622
sales@colmacind.com | www.colamcwaterheat.com

Sound Insulated Cabinet

Colmac Water Source Water Heating Heat Pumps are offered with sound insulated cabinets. These cabinets reduce unit sound emissions to less than conversational levels. Easily removed panels for maintenance access. Insulated with mold resistant closed cell acoustical foam. Clean appearance keeps internal components protected. Open face for easy electrical access.

Please contact Colmac WaterHeat for more information or visit us on the web at www.colmacwaterheat.com



Front view of a Colmac Model HPW9 with an enclosed cabinet

Available in:

- Aluminum
- 304 Stainless Steel
- 316 Stainless Steel
- Galvanized Steel
- All options above can be painted



Rear view of a Colmac Model HPW9 with an enclosed cabinet

COLMAC 
WATERHEAT

401 N. Lincoln • P.O. Box 72
Colville, WA 99114 USA
Tel: (509) 684-4505 • Fax: (509) 684-4500
Toll Free: (800) 926-5622
sales@colmacind.com | www.colamcwaterheat.com