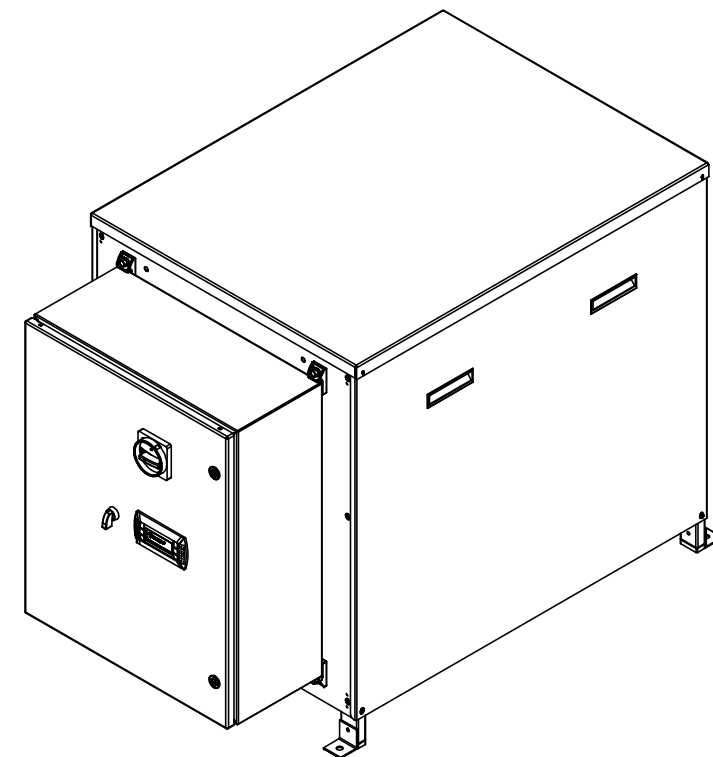
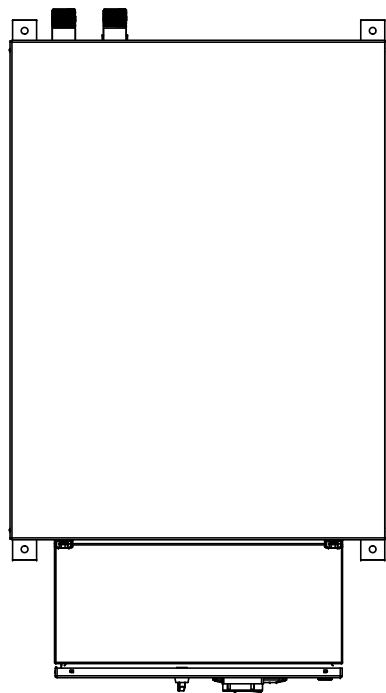
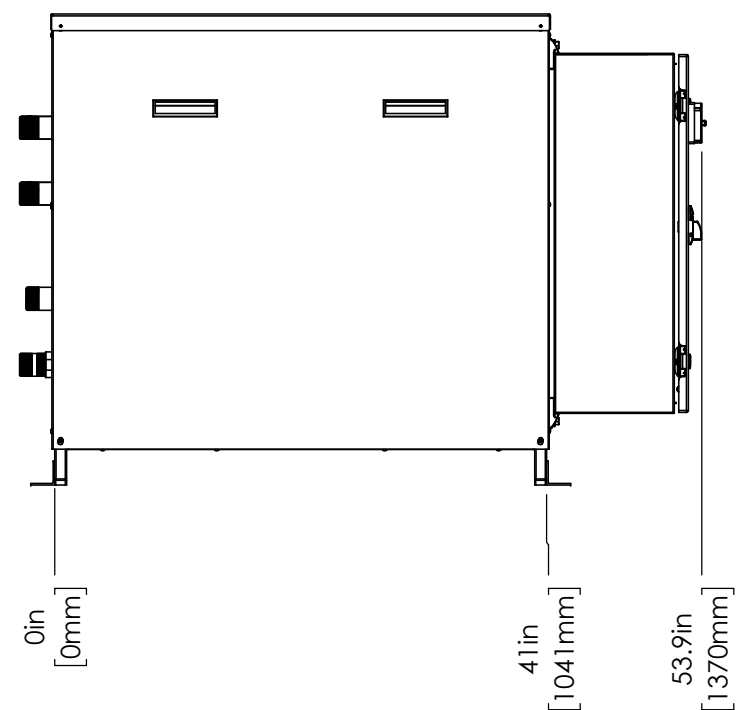


Unit Specifications:

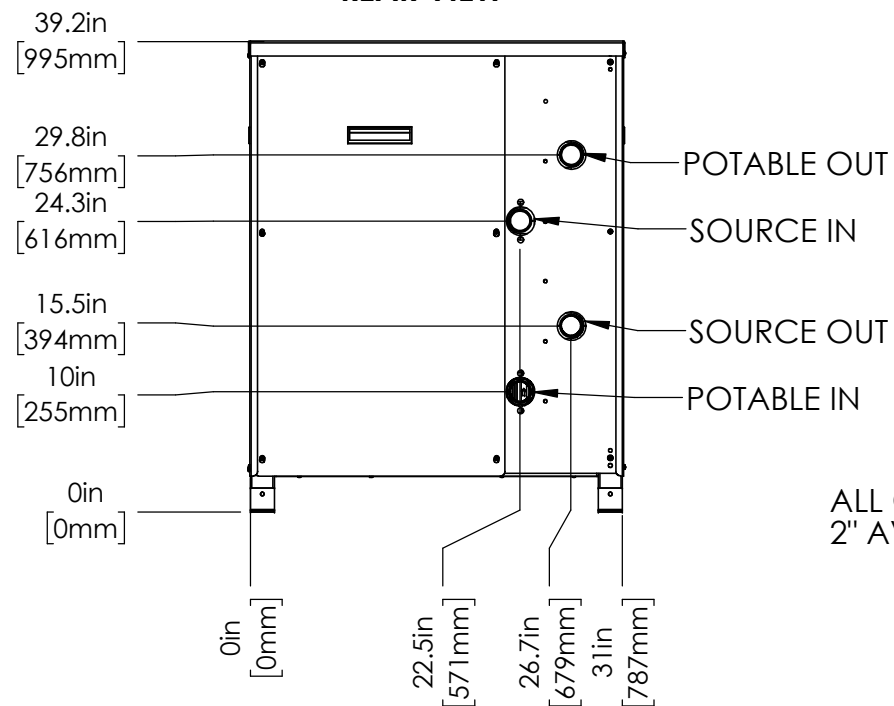
- Compressor: (1) Scroll, Copeland or Equivalent
- Condensers: (1) Brazed Plate
- Evaporators: (1) Brazed Plate
- Potable Water Pump: (1) Standard, 150 Max Working Pressure
- Source Water Pump: Provided by Others; 165 PSI Max Working Pressure
- Maximum Source Flow Rate: 150 GPM
- Control: Microprocessor (PLC)
- Frame: 304 SST
- Refrigerant: 134a



RIGHT SIDE VIEW



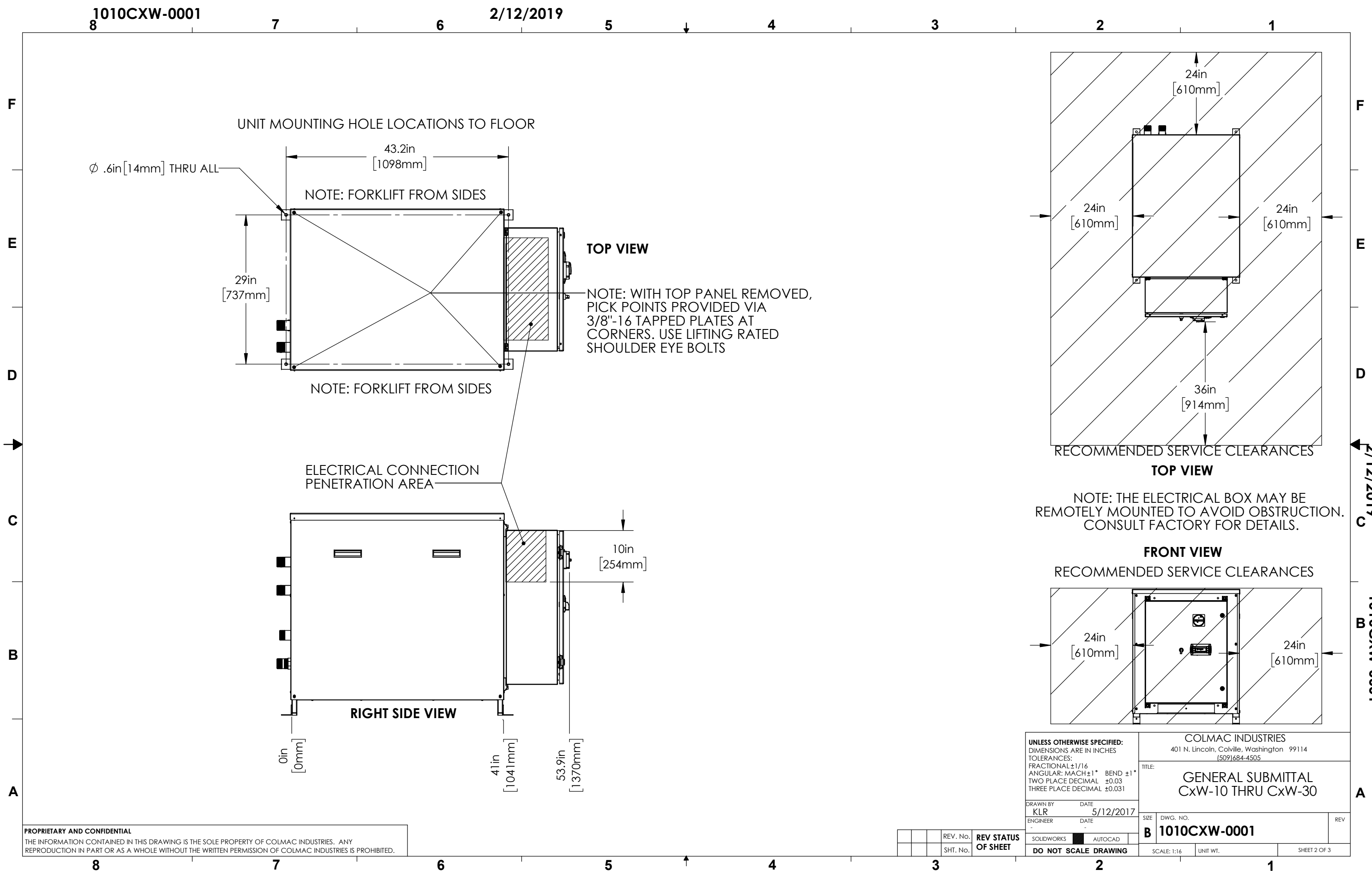
REAR VIEW



ALL CONNECTIONS ARE 1.5" MNPT.
2" AVAILABLE BY REQUEST.

<p>UNLESS OTHERWISE SPECIFIED: DIMENSIONS ARE IN INCHES TOLERANCES: FRACTIONAL ±1/16 ANGULAR: MACH ±1° BEND ±1° TWO PLACE DECIMAL ±0.03 THREE PLACE DECIMAL ±0.031</p>		<p>COLMAC INDUSTRIES 401 N. Lincoln, Colville, Washington 99114 (509)684-4505</p>	
<p>DRAWN BY: KLR DATE: 5/12/2017 ENGINEER: DATE:</p>		<p>TITLE: GENERAL SUBMITTAL CxW-10 THRU CxW-30</p>	
<p>REV. No. REV STATUS OF SHEET SHT. No.</p>		<p>SIZE: DWG. NO. B 1010CXW-0001</p>	<p>REV</p>
<p>DO NOT SCALE DRAWING</p>		<p>SCALE: 1:16</p>	<p>UNIT WT. SHEET 1 OF 3</p>

PROPRIETARY AND CONFIDENTIAL
THE INFORMATION CONTAINED IN THIS DRAWING IS THE SOLE PROPERTY OF COLMAC INDUSTRIES. ANY REPRODUCTION IN PART OR AS A WHOLE WITHOUT THE WRITTEN PERMISSION OF COLMAC INDUSTRIES IS PROHIBITED.



PROPRIETARY AND CONFIDENTIAL
 THE INFORMATION CONTAINED IN THIS DRAWING IS THE SOLE PROPERTY OF COLMAC INDUSTRIES. ANY REPRODUCTION IN PART OR AS A WHOLE WITHOUT THE WRITTEN PERMISSION OF COLMAC INDUSTRIES IS PROHIBITED.

REV. No.	REV STATUS OF SHEET	ENGINEER	DATE	SCALE: 1:16	UNIT WT.	SHEET 2 OF 3
SHT. No.						

UNLESS OTHERWISE SPECIFIED:
 DIMENSIONS ARE IN INCHES
 TOLERANCES:
 FRACTIONAL ±1/16
 ANGULAR: MACH ±1° BEND ±1°
 TWO PLACE DECIMAL ±0.03
 THREE PLACE DECIMAL ±0.031

COLMAC INDUSTRIES
 401 N. Lincoln, Colville, Washington 99114
 (509)684-4505

TITLE:
GENERAL SUBMITTAL
CxW-10 THRU CxW-30

DRAWN BY: KLR DATE: 5/12/2017
 ENGINEER: DATE:

SIZE: DWG. NO. REV
B 1010CXW-0001

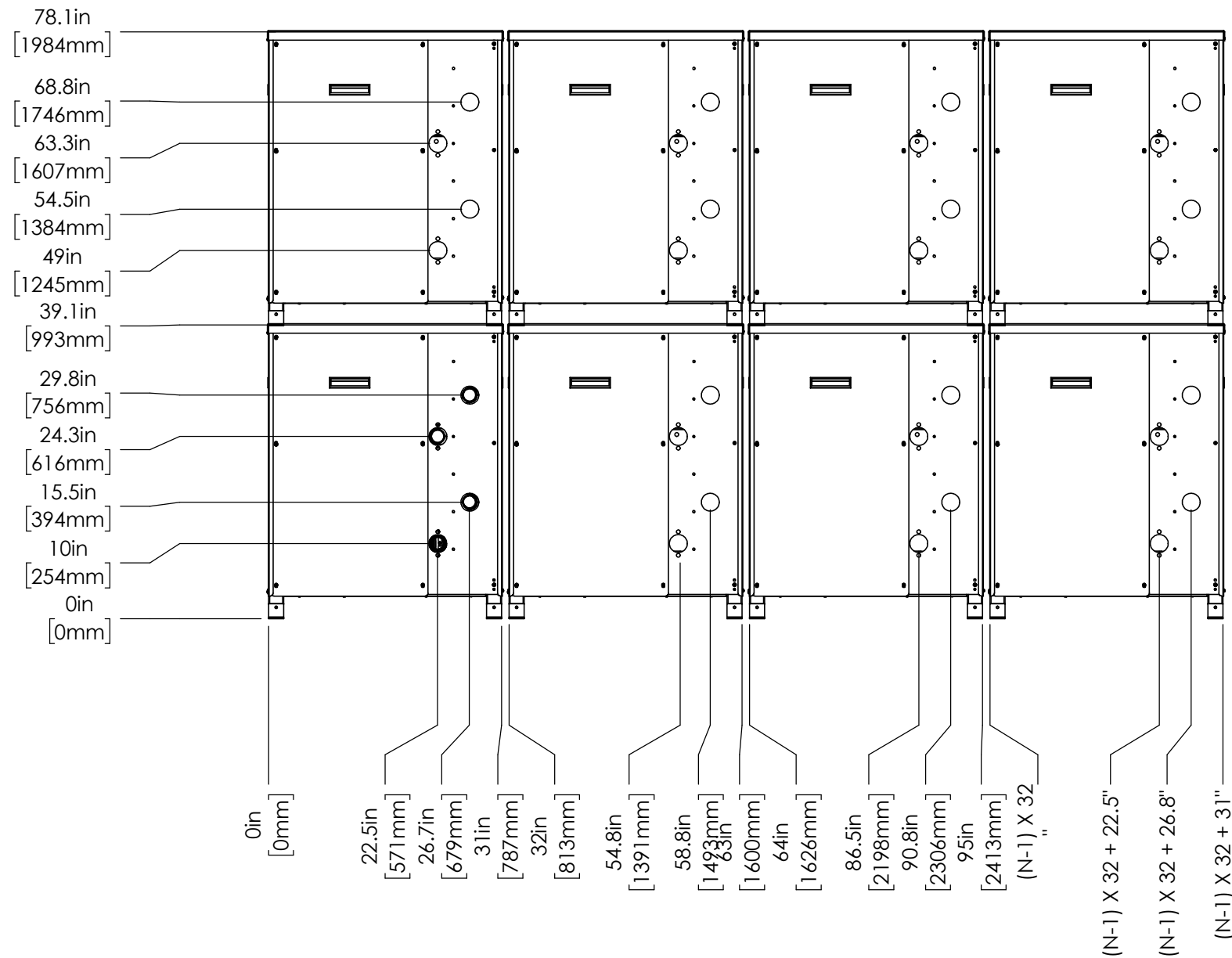
DO NOT SCALE DRAWING

1010CXW-0001

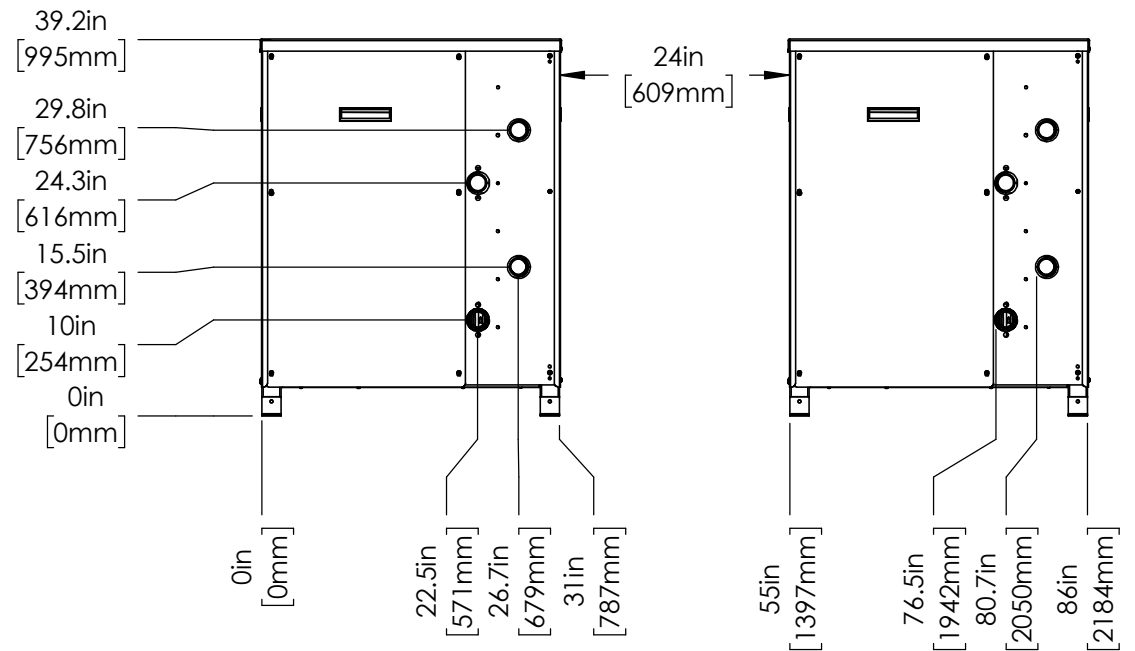
2/12/2019

NOTE: UNITS MAY BE STACKED UP TO TWO HIGH (STACKING IS NOT SEISMICALLY RATED) UNITS MAY ALSO BE INSTALLED SIDE BY SIDE WITH 1" GAP SO LONG AS PROVISION IS MADE FOR SERVICING (FOR EXAMPLE, BY PULLING UNITS FORWARD, OR BY MOVING UNITS TO ONE SIDE); OTHERWISE, A MINIMUM OF 24" IS RECOMMENDED BETWEEN UNITS.

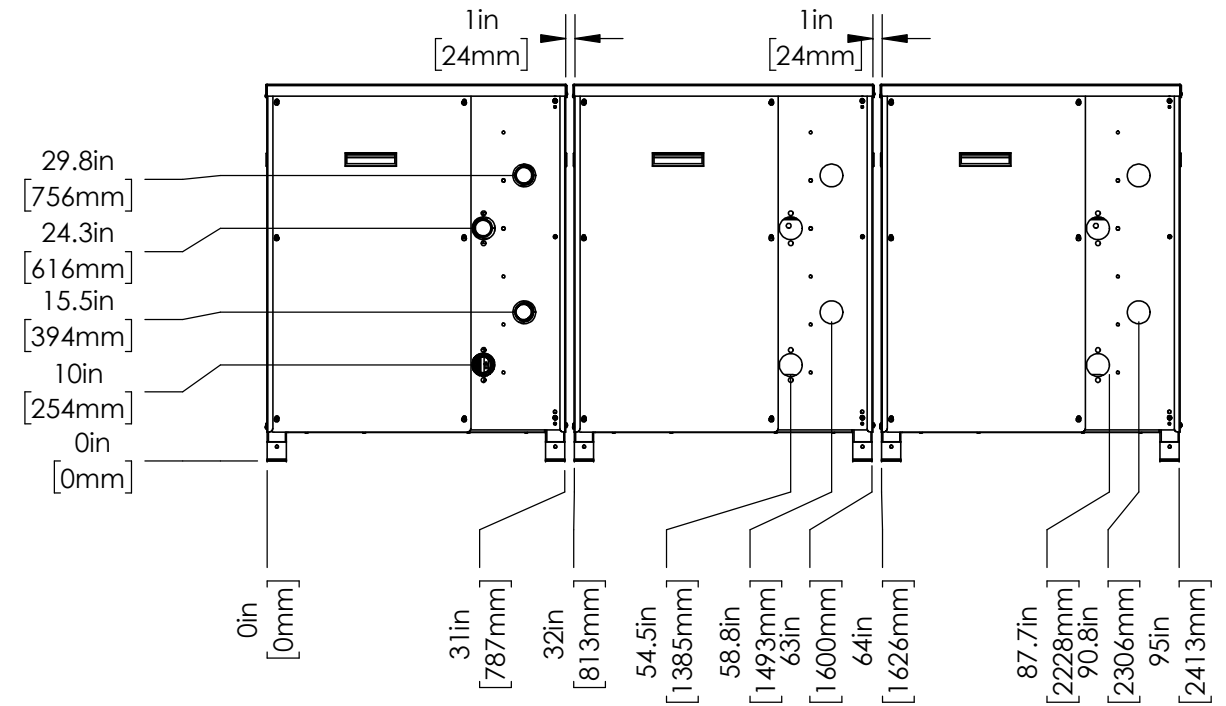
EXAMPLE CONFIGURATION: 2 X N SERVICE CLEARANCE PROVIDED BY MOVING STACKED UNIT PAIR FORWARD



EXAMPLE CONFIGURATION: 1 X 2 WITH SERVICE CLEARANCE



EXAMPLE CONFIGURATION: 1 X 3



PROPRIETARY AND CONFIDENTIAL THE INFORMATION CONTAINED IN THIS DRAWING IS THE SOLE PROPERTY OF COLMAC INDUSTRIES. ANY REPRODUCTION IN PART OR AS A WHOLE WITHOUT THE WRITTEN PERMISSION OF COLMAC INDUSTRIES IS PROHIBITED.

UNLESS OTHERWISE SPECIFIED: DIMENSIONS ARE IN INCHES TOLERANCES: FRACTIONAL ±1/16 ANGULAR: MACH ±1° BEND ±1° TWO PLACE DECIMAL ±0.03 THREE PLACE DECIMAL ±0.031

COLMAC INDUSTRIES 401 N. Lincoln, Colville, Washington 99114 (509)684-4505

TITLE: GENERAL SUBMITTAL CxW-10 THRU CxW-30

DRAWN BY: KLR DATE: 5/12/2017 ENGINEER: DATE: SOLIDWORKS AUTOCAD DO NOT SCALE DRAWING

SCALE: 1:16 UNIT WT. SHEET 3 OF 3